



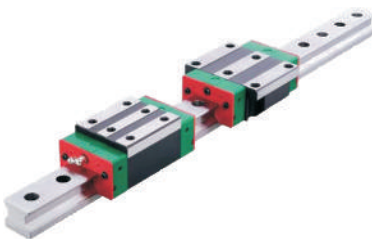
Making Accuracy Affordable

SFX 1000

Waterjet Cutting Systems



Precision Linear Bearings



**Helical Rack
For Smooth Motion**



Digital Motion Control



- ▶ **Virtually Dry Cutting Technology**
- ▶ **Positioning Speeds To 4000 IPM**
- ▶ **Positioning Accuracy: +/- .004"**
- ▶ **Cutting Envelope: 20" x 40"**

- ▶ **Advanced PC/CNC Control**
- ▶ **Precision Digital Motion System**
- ▶ **Fully Enclosed Operation**
- ▶ **Interlocked Access To Cutting Surface**

Standard Features

- Virtually Dry Cutting Technology
- Dual Drive Gantry
- Precision Helical Rack & Pinion Motion
- Precision Square Linear Bearings
- Hard Chromed Linear Rails
- Full Digital Motion
- 8,000 Count Encoders
- Fully Enclosed Operation
- Safety Interlocked Access Door

Specifications

- Cutting Envelope: 40" x 20"
- Positioning Accuracy: +/- 0.004"
- Repeatability: +/- 0.003"
- Motion Speed: To 4000 IPM

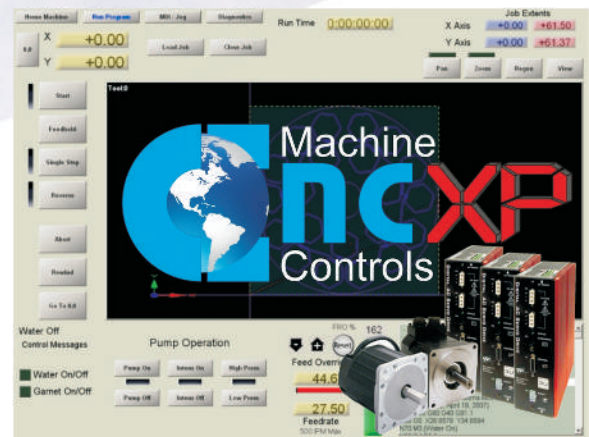
High Pressure Pumps

- Available From 15 HP To 75 HP
- Advanced Hydraulic Intensifier
- 60,000 PSI Continuous Rated Output
- Dual Pressure Operation*
- Ceramic Plungers
- Solid State PLC Monitored Electronic Shift
- Non Threaded Easy Maintenance HP Cylinders



Controller

- Advanced PC Control
- Windows Based Graphical User Interface
- 20" LCD Display
- Standard Ethernet Communications
- On Screen Cut Path Graphics
- Full Cut Path Retrace
- Runs Standard G Code
- Runs Standard DXF And HPGL Files
- Online Diagnostics And Help



Options

- Tangential / Beveled Edge Cutting
- Custom Cutting Envelopes
- Range Of High Pressure Pump Sizes
- Job Posting & Setup Software